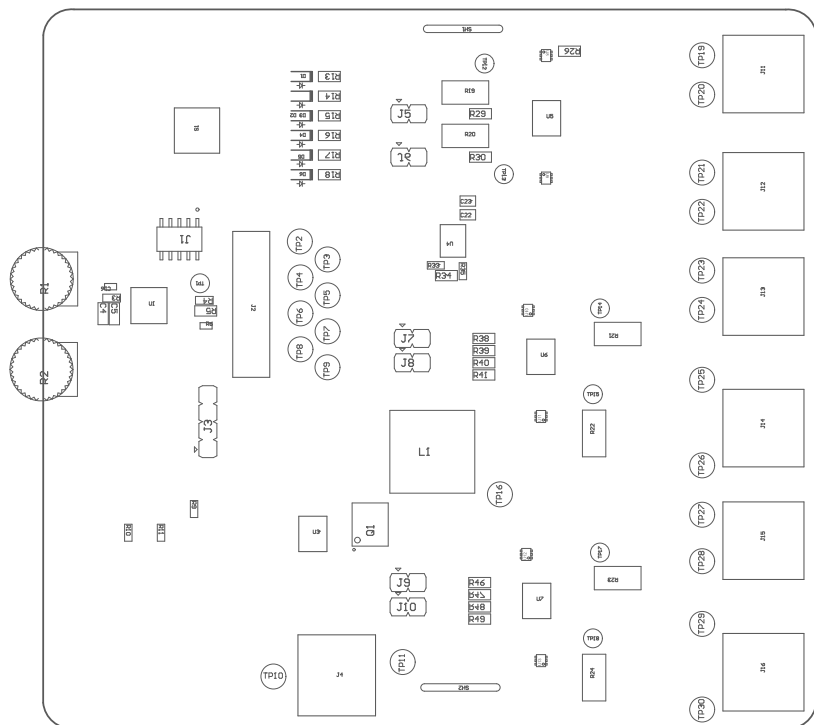


Z21 ■ Install label in silkscreened box after final wash. Text shall be 8 pt font. Text shall be per the Label Table in the PDF schematic.

Z22 ■ These assemblies are ESD sensitive, ESD precautions shall be observed.

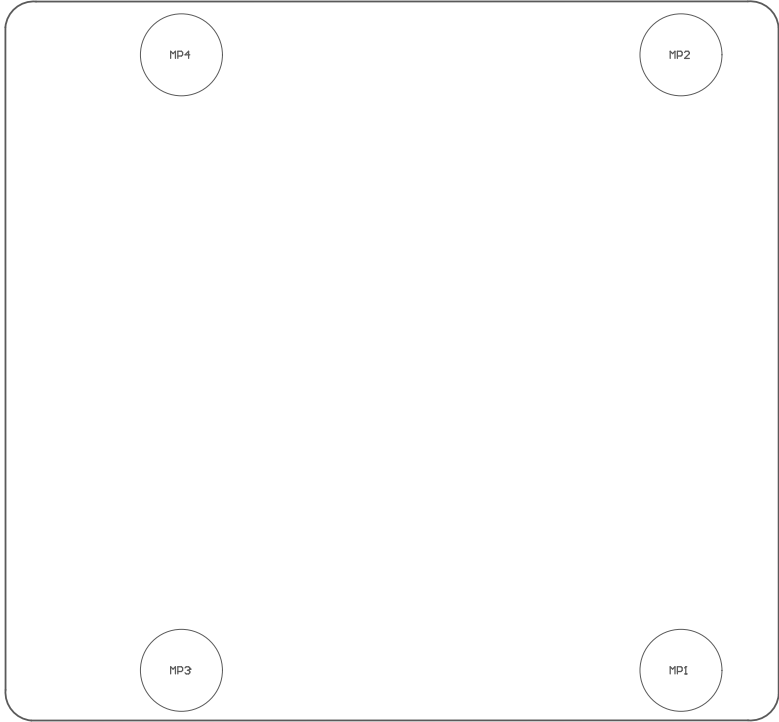
Z23 ■ These assemblies must be clean and free from flux and all contaminants. Use of no clean flux is not acceptable.

Z24 ■ These assemblies must comply with workmanship standards IPC-A-610 Class 2, unless otherwise specified.



COMPONENTS MARKED 'DNP' SHOULD NOT BE POPULATED.
ASSEMBLY VARIANT: DRV81325-Q1EVM

| | | | |
|----------------------------------|-----------------------|------------|---------------------------------|
| PCB VIEWED FROM TOP SIDE | BOARD #: MD129-001 | REV: E2 | SUN REV: Not in version control |
| | TID #: N/A | | |
| PLOT NAME = Top Assembly Drawing | GENERATED : 3/23/2026 | 8:08:51 PM | TEXAS INSTRUMENTS |



Not in version control

COMPONENTS MARKED 'DNP' SHOULD NOT BE POPULATED.
 ASSEMBLY VARIANT: DRV81325-GIEUM

| | | | |
|-------------------------------------|-----------------------|------------|-------------------|
| PCB VIEWED FROM BOTTOM SIDE | BOARD #: MD129-001 | REV: E2 | SUN REV: |
| | TID #: N/A | | |
| PLOT NAME = Bottom Assembly Drawing | GENERATED : 3/23/2026 | 8:08:51 PM | TEXAS INSTRUMENTS |